



Professional Parts OEM Non-
standard Custom Manufacturer

v1.2

Table of contents

01

Company
Introduction

02

Scope of
Business

03

Development
History

04

Production
Equipment

05

Detection
Instrument

06

Industry
Application

07

Processing
Case

08

Contact
Information





Company Introduction

Sunnyhowe, located in Shenzhen, China, is a manufacturer specializing in CNC machining and 3D printing services, certified with ISO9001:2015. Established in 2000, the company currently owns advanced CNC machinery and precision measurement instruments, including 3-axis and 5-axis CNC Machines, High-speed CNC machines, Swiss lathes, Wire EDM Machines, Grinding Machines, 3D Printers, Sandblasters, CMM (coordinate measuring machine), VMM (vision measuring machine), Hardness Testers, 3D Video Microscopes, and more.

Sunnyhowe is equipped with comprehensive machinery and experienced engineers, capable of achieving CNC machining part accuracy of up to 0.002mm. Our company is committed to providing high-quality products and services to meet your needs, whether for small or large-scale production. Sunnyhowe's professional team ensures the timely delivery and high-precision quality of every project.

Company advantages



Industry leader, with a global presence.

Company History

Founded in 2000, focusing on precision manufacturing for 24 years, serving over 1,000 enterprises worldwide.

Materials

Providing more than 80 types of metals and plastics.

Production equipment

A total of approximately 100 manufacturing equipment and testing instruments.

Factory Area

The current production workshop has a total area of 3,000 square meters and is expected to expand to 4,500 square meters by June 2025.

Capapility

Approximately 6,500 machined parts per month.

Global Expansion Strategy

Business layout primarily focuses on Asia, Europe, and the Americas.

Scope of business

We provide OEM machining for automation equipment parts. If you are developing equipment or need parts machining for non-standard equipment, you can contact us. Our factory offers faster response times and more competitive pricing.



CNC Milling

Custom CNC-milled parts using more than 50 different types of metals and plastics.



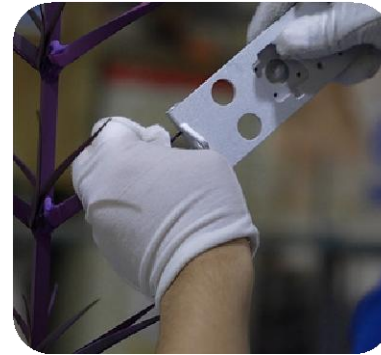
CNC Turning

We manufacture your custom-turned parts according to strict manufacturing standards.



3D Printing

The easiest way to quickly produce high-quality 3D-printed prototype parts.



Surface Treatment

We offer various types of surface treatments to enhance the appearance and corrosion resistance of your parts.



Assembly Services

We also provide rapid assembly services for precision molds and products. One-stop machining and assembly ensure faster turnaround.

Development history

Establishment

At its inception in 2000, the company had 10 machines and primarily provided parts machining services to Chinese customers.

New Factory

In 2008, the company relocated to a 1,200-square-meter factory, equipped with 30+ machines and a team of 20+ engineers.

Expansion

In 2013, the company relocated to a 2,000-square-meter factory, equipped with 50+ machines and a team of 32+ engineers.

Brand

In 2015, the company focused on brand development, establishing a strong reputation through high-quality machining services.

Service Expansion

Since 2025, the company has been integrating industry resources, continuously expanding its foreign trade service team, and steadily increasing production capacity.

Scale Expansion

In 2022, the company expanded its factory and service scope. The factory covers 3,000 square meters, with 95+ machines and a team of 50+ engineers.

Optimizing Sales Team

In 2019, the company integrated industry resources, continuously expanded its foreign trade service team, and steadily increased production capacity.

Production equipment

The equipment includes 3-axis, 3+2-axis, and 5-axis CNC machines, high-speed CNC machines, turning and milling composite lathes, CNC lathes, wire EDM, grinding centers, 3D printers, sandblasting machines, and more.



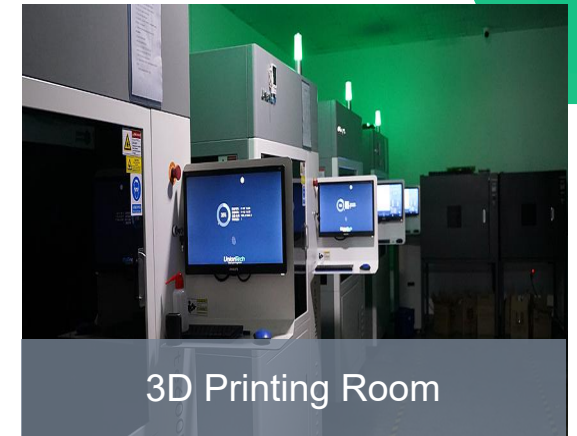
Turn-Mill Complex Machine



3-Axis Machining Center



CNC Lathe



3D Printing Room



5-Axis CNC Machine



Wire EDM



Grinding Centers

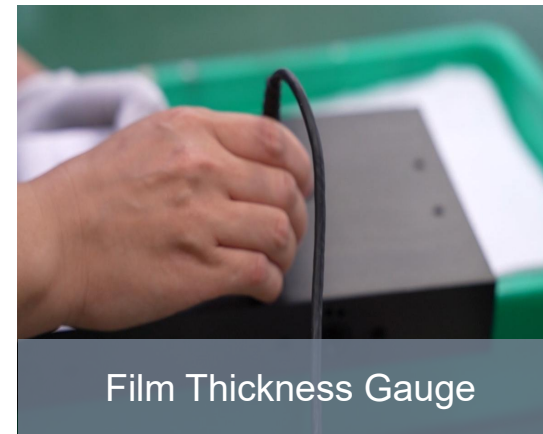
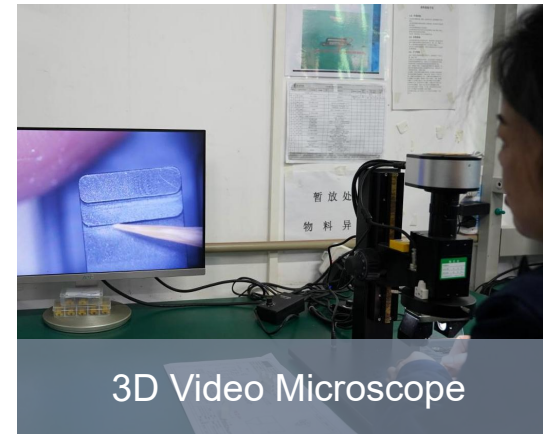
CNC Machining Tolerances

Category	Description
Maximum Part Size	Milled parts can reach dimensions of up to 80 inches × 48 inches × 24 inches (2,032 × 1,219 × 610 mm). Lathe parts can be up to 62 inches (1,575 mm) in length and 32 inches (813 mm) in diameter.
Lead Time	3 working days.
General Tolerance	Tolerances on metals will be held to +/- 0.005" (+/- 0.127 mm) in accordance with ISO 2768 unless otherwise specified. Plastics and composites will be +/- 0.010".
Precision Tolerance	Sunnyhowe can manufacture and inspect to tight tolerances, including sub +/- 0.001" tolerances, per your drawing specifications and GD&T callouts.
Minimum Part Size	0.020" (0.50 mm). This may vary depending on part geometry and chosen material.
Threads and Tapped Holes	Sunnyhowe can accommodate any standard thread size. We can also machine custom threads; these will require a manual quote review.
Edge Treatment	Sharp edges are broken and deburred by default.
Surface Finish	The standard finish is as-machined: 125 Ra or better. Additional finishing options can be specified when getting a quote.



Testing equipment

Including CMM (Coordinate Measuring Machine), VMM (Vision Measuring Machine), 3D video microscope, hardness tester, salt spray test machine, film thickness gauge, height gauge, and more.



Testing Standards

Comprehensive Inspection to Ensure Quality

Advanced Inspection Equipment

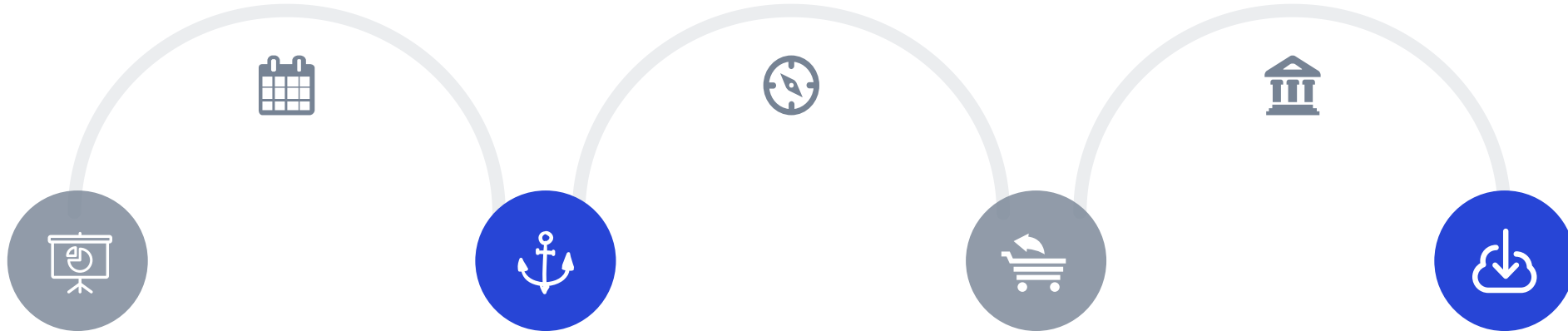
Equipped with multiple internationally advanced inspection instruments to ensure product quality meets international standards.

Strict Inspection Process

Implementing a multi-level inspection process to ensure every product undergoes rigorous quality control.

Non-Destructive Testing

Apply non-destructive testing technology to ensure that the product is not damaged during the inspection process.



Real-time Monitoring System

A real-time monitoring system is used to ensure traceability of the testing process and reliability of the data.

Professional Testing Team

We have an experienced professional testing team to ensure the accuracy of test results.

Environmental Simulation Testing

We provide environmental simulation testing to ensure the reliability of products in different environments.

Automated Testing System

We have introduced an automated testing system to improve testing efficiency and reduce human error.

Industry application

Sunnyhowe has manufactured tens of thousands of parts for various industries. Below are our actual manufacturing capabilities in these specialized fields.



Industrial Machinery

Manufacturing industrial-grade mechanical components to keep machines performing at their best.



Consumer Electronics

Manufacturing parts for gaming, audio, video, and smart home products that require highly aesthetic features.



Robotics and Automation

Producing complex robotic parts, end effectors, and automation machinery for this innovative industry.



Medical

Medical devices and diagnostic equipment, bringing healthcare innovation to hospitals and homes.



Aerospace

Manufacturing aerodynamic parts for airplanes, drones, satellites, and rockets.



Automotive

Supporting the rapid development of electric vehicles, charging equipment, and other automotive innovations.





Machining Case

In the past few years, our company has closely collaborated with clients from various industries to manufacture and process a wide range of parts, helping them achieve commercial success.

CNC Milling Cases



Medical Parts

Material: Stainless Steel

Equipment: 3-Axis Machine

Surface: Natural Anodizing

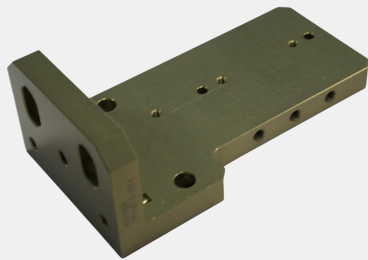


Medical Parts

Material: Teflon

Equipment: Turn-Milling Machine

Surface Treatment: Cleaning



Automation Parts

Material: Brass

Equipment: 3-Axis Machine

Surface: Chrome Plating



Robotic Parts

Material: Aluminum Alloy

Equipment: 3-Axis Machine

Surface: Anodizing

CNC Turning Cases



Medical Parts

Material: PEEK

Equipment: Turn-Milling CNC Machine

Surface: Cleaning



Medical Parts

Material: Stainless Steel

Equipment: Turn-Milling CNC Machine

Surface: Natural Anodizing



Equipment Parts

Material: Brass

Equipment: CNC Lathe

Surface: Natural Anodizing



Equipment Parts

Material: Aluminum Alloy

Equipment: Turn-Milling Machine

Surface: Cleaning

CNC Turning Cases



DSLR Lens Housing

Material: Aluminum Alloy

Equipment: Turn-Milling CNC Machine

Surface: Cleaning



DSLR Lens Housing

Material: Aluminum Alloy

Equipment: Turn-Milling CNC Machine

Surface: Cleaning



DSLR Lens Housing

Material: Aluminum Alloy

Equipment: Turn-Milling CNC Machine

Surface: Black Anodizing



DSLR Lens Housing

Material: Aluminum Alloy

Equipment: Turn-Milling CNC Machine

Surface: Cleaning

3D Printing Cases



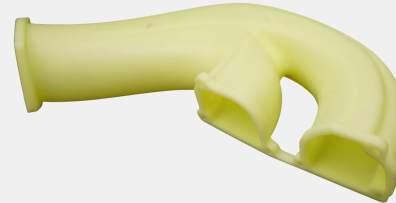
3D Printing

Material: Photosensitive Resin

Equipment: 3D Printer

Surface: Paint Spraying + Silk Screen

Printing



3D Printing

Material: Photosensitive Resin

Equipment: 3D Printer

Surface: Paint Spraying + Silk Screen

Printing



3D Printing

Material: Photosensitive Resin

Equipment: 3D Printer

Surface: Paint Spraying + Silk Screen

Printing



3D Printing

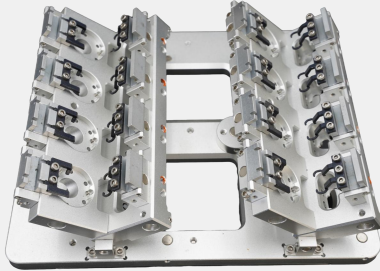
Material: Photosensitive Resin

Equipment: 3D Printer

Surface: Paint Spraying + Silk Screen

Printing

Assembly Cases

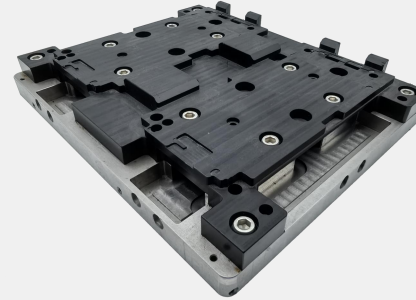


Product Fixtures

Material: Aluminum Alloy

Equipment: 3-Axis CNC Machine

Surface: Sandblasting + Type II Anodizing

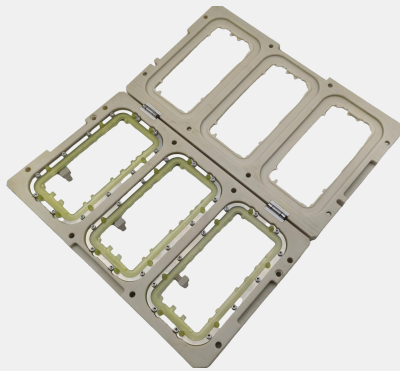


Product Fixture

Material: Aluminum Alloy + PA

Equipment: 3-Axis CNC Machine

Surface: Cleaning



Mobile Screen Fixture

Material: PEEK + Aluminum Alloy

Equipment: 3-Axis CNC Machine

Surface: Cleaning



Memory Module Fixture

Material: Aluminum Alloy + PA

Equipment: 3-Axis CNC Machine

Surface Treatment: Gold Anodizing

Injection Molding Cases



Charging Gun Housing

Material: PBT

Process: Mold Injection Molding

Surface: Spraying + Polishing



Charging Gun Cover

Material: PBT

Process: Mold Injection Molding

Surface: Spraying



Charging Gun Connector

Material: PBT

Process: Mold Injection Molding

Surface: Spraying



Charging Gun Cover

Material: PBT

Process: Mold Injection Molding

Surface: Spraying

Surface Treatment



Nano Coating

contact us for more material information



Sandblasting + Type II Anodizing

Aluminum, Copper, Low Carbon Steel, Titanium, Brass, Alloy Steel, Stainless Steel, Tool Steel



Electroless Nickel Plating

Aluminum, Steel, Stainless Steel



Brushing

Stainless Steel, Aluminum Alloy, Copper Alloy, Nickel Alloy



Anodizing

Aluminum



Tumbling

Aluminum, Steel, Stainless Steel, Brass, Bronze, Copper



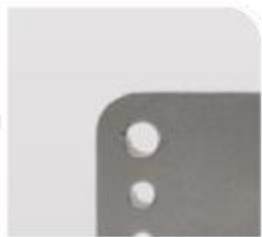
Passivation

Steel, Stainless Steel



Galvanization

Steel, Stainless Steel



Chrome Plating

Stainless Steel, Nickel Alloy, Aluminum Alloy, Copper Alloy



Black Oxide

Steel, Stainless Steel



Machining Process

Aluminum, Steel, Stainless Steel



Electropolishing

Steel, Stainless Steel

Machining Materials

Diverse Material Options

Plastic Materials

Nylon, Acrylic, POM, Igus, etc., suitable for lightweight and insulation requirements.

Special Materials

Ceramics, Tungsten Alloys, etc., suitable for extreme environments and high wear resistance requirements.

Material Selection Recommendations

Provide expert advice to help customers select the best material solution.

Metal Materials

Aluminum, steel, copper, titanium, etc., suitable for high strength and corrosion resistance requirements.

Composite Materials

Carbon fiber, fiberglass, etc., suitable for high strength and lightweight requirements.

Material Certification

All materials comply with international standards and industry certification requirements.

Material Inventory Management

Maintain stock of commonly used materials to shorten production cycles and improve efficiency.

How to start working with us

01



Upload Your Files

First, simply choose a manufacturing process and upload the 2D/3D CAD drawing files.

02



Obtain DFM Quote

Within a few hours, we will send you the Design for Manufacturability (DFM) analysis and real-time pricing.

03



Manufacturing Begins

Once you review your quote and place your order, we'll start the manufacturing process. We also offer finishing options.

04



Part Shipment

Our digital manufacturing process allows us to produce parts in as fast as 1 day.

05



Package Tracking

A dedicated person will be responsible for tracking the express shipment progress and providing timely updates to the customer on order details.

06



Order Completion

Once the customer signs for the product, the collaboration concludes. After communication, confirm whether there are any new products that need to be produced in the future..

07



Customer Feedback

The customer highly appreciates the stability and reliability of the product.

Contact Information

Company Name

Sunnyhowe Co., Ltd

Address

1st Building, Nanjiang Industrial
Park, Huafan Road No. 1,
Dalang Street, Longhua District,
Shenzhen, China

Tel

+86 153 6186 5405

Email

sales@sunnyhowe.com

Website

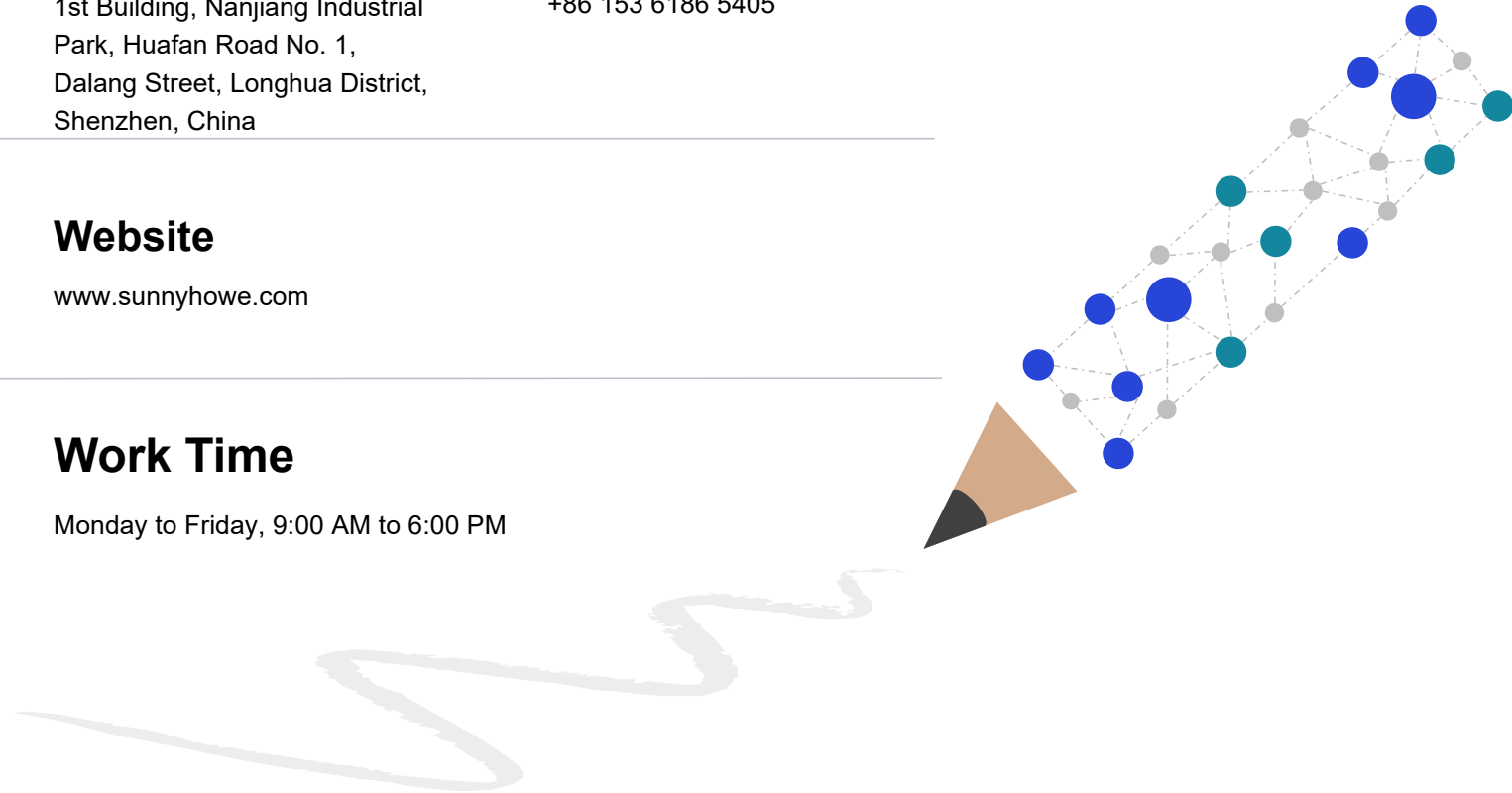
www.sunnyhowe.com

Social Media

LinkedIn, Twitter

Work Time

Monday to Friday, 9:00 AM to 6:00 PM



Thank you